



Stockland Group:

Looking for an outstanding location for your next office?

Look no further - part of the well-known Abode development right in the heart of Crows Nest, these commercial office suites could be the answer to your office accommodation.

Developed by the Stockland group these office suites are bright, modern and well located.

With only a few of these suites remaining unsold, now is the time to sign up and move into great new offices.

Kelvin Grove by Indigo

The Kelvin Grove Project in Brisbane was developed by Indigo- an entrepreneurial development group listed as one of the Top 25 privately owned organisations in Queensland.

Located in Kelvin Grove, Brisbane the Kelvin Grove property is valued at \$90 million and is in development from 2003-2006. The Village Centre residential stage will comprise of 210 apartments in 4 residential towers ranging from 4 to 8 stories high.

This private park will compliment the adjacent parklands including bicycle and walking trails to Spring Hill and into the City. With a supermarket, retail shops and café strip lining the pedestrian friendly footpaths the Village Centre will become a unique way of life only 5km's to the Brisbane CBD.

Indigo's Property division is currently involved in projects throughout the state worth over \$500 million with a focus of quality residential, commercial, retail and land subdivision. A strong partnership of design, management and marketing skills combine with a value adding focus to enable the company to convert opportunity into reality with minimum risk and optimum result.

In every project, Indigo strives to create livable solutions for residential developments that stand out from the crowd and stand the test of time. Its commercial enterprises are distinguished by similarly innovative yet enduring design features.

Having the vision to recognize potential development opportunities and timing their acquisition to meet market demands is an Indigo trademark which ultimately benefits the customer.

Indigo Blue epitomizes quality and superior lifestyle. Comprising of 44 units in a 20 storey tower, it offers 4 penthouse apartments, four 2 storey beach houses and a selection of 2 and 3 bedroom apartments. The development includes five star finishes throughout including European appliances, wide useable balconies with retractable lanai shutters and state of the art security. The fully landscaped grounds also incorporate a resort style pool, full size tennis court and freestanding gymnasium set amongst lush tropical gardens.



Night and Day in Crows Nest

The Brief: Show the last remaining commercial offices suites in the Abode complex as they will look when happy purchasers move in.

The Response: Furnish the units using the interior design skills of our in-house interior design team (led by Zein Karamy)

Create two identical perspectives showing night and dusk views.

Add an exterior photomontage to the mix.

The Result: Stunning!

yourvisionourreality



Its bright, it's shiny - it's a **Solid Crystal Model** from Idrawfast. Can you imagine your building looking just like this? Call us today.



There is no denying that it took a while to get this website up and running - BUT it is up and running now!

We have created a CD-ROM and download service with many of the models we have created for clients and we want to share them with 3D artists - (yes - even our market competitors). Over 1000 furniture models available as well as a monthly subscription service for 100 furniture models that will add value to your 3D presentations. After all, furniture is not that easy to model, but it just got easier!

www.3dfurnituremodels.com



See how easy it is to enjoy the benefits of idrawfast.

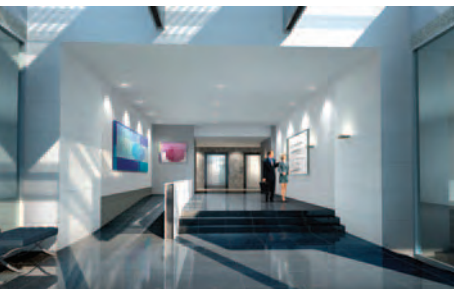
Models available in 3DS formats.

The Total Solution

www.3dfurnituremodels.com

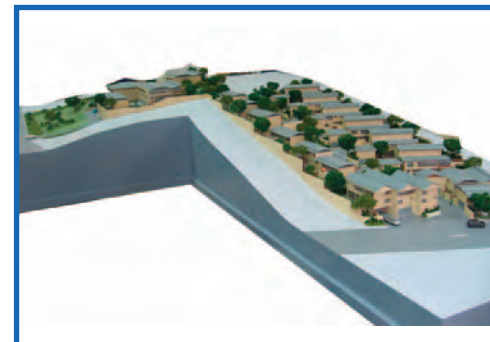
Refurbished CSC Building 460 Pacific Highway.

Burling Realty in conjunction with Bamburgh Development have refurbished the old CSC Building at 460 Pacific highway - with 55 brand new offices and 6 retail units.



yourvisionourreality

The Winning Formula: Perspectives, Exterior Physical model, Apartment Model with removable roof, Animation and Coloured Floor Plans



Interior Physical Model of Apartment
- roof lifts off to display interior of apartment with furniture and layout.

Design Development
by
Graham Jago of
Nordon Jago
Architects

Interior Design by
Ruth Levene

